

HEALTH CAMPUS LIMBURG DC



"We strive for responsible entrepreneurship in health & care through cooperation, innovation, and valorisation. The dynamics between the talent of the university, colleges, and companies on the same campus form a strengthening ecosystem in the life sciences. The campus is because they are."

Roeland Buckinx
Health Campus Manager



WELCOME IN LIMBURG

Limburg is a dynamic, powerful, and knowledge-intensive region with a particularly entrepreneur-friendly climate, and talent in abundance. Health Campus Limburg is the best proof of this. This new crossroads for cross-fertilisation is a hotbed of innovation. Here, knowledge institutions, care organisations, companies, and governments are jointly building the care economy of the future and the leading care lab in the centre of Europe. As a government and as a community, we are at your service.

Jos Lantmeeters, Governor of Limburg
Tom Vandeput, Chair POM Limburg

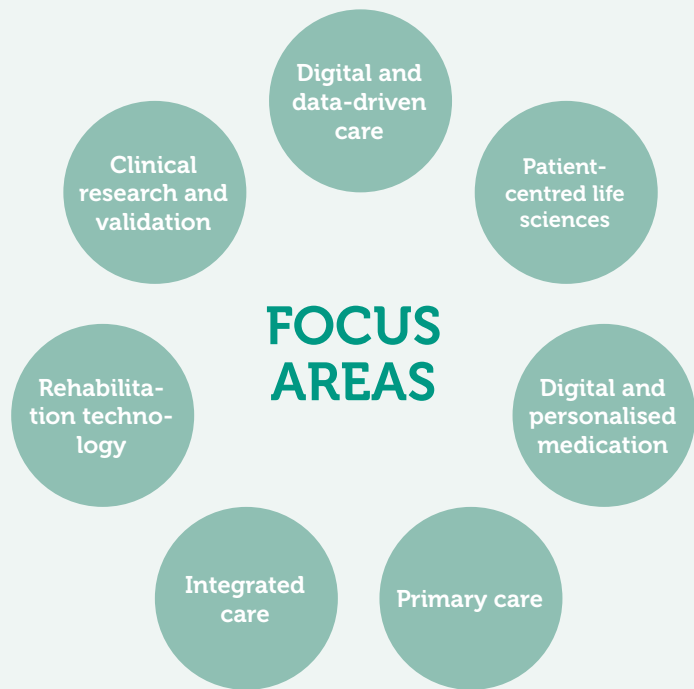
WAT IS THE HEALTH CAMPUS LIMBURG?

Crossroads for cross-fertilisation

Health Campus Limburg is building the future of healthcare. We promote partnerships and entrepreneurship, innovation, and implementation of scientific knowledge in practice. This is how we develop better quality healthcare.

Community as the hub

The campus is a pole of attraction for companies, care and welfare providers, research, and education. Community building is at the heart of its operation. This will encourage links between business and government, education, health, and welfare providers and citizens. Health Campus Limburg is thus emerging as the place to do business, innovate, and study.



Innovative Health Campus projects

Remote Clinical Monitoring Centre

Our healthcare system will change dramatically in the future due to remote medicine. Wearable sensors, apps, and other digital health applications play an important role here. We are pioneering a **Remote Clinical Monitoring Centre (RCMC)** here at the Health Campus. Patients are monitored remotely from their familiar home environment. The RCMC aims to collect all patient data, integrate it into a database, and make it available to healthcare providers.

THINK3 laboratory for open healthcare innovation

Innovative ideas for the healthcare of the future often have great potential, but are hindered in implementation by the complexity of the healthcare system. **Hasselt University's THINK3 centre** tackles these challenges in system and process innovation through a co-creative process with academics, care providers, innovators, and other experts. From brainstorming to simulation and application, based on scientific insights in implementation science, and in a learning network of care experts.

"The support of the Health Campus team and the provincial and Flemish government encouraged us to make Belgium the headquarters of all European activities of Amador Bioscience. As a CRO that operates globally, the proximity of several universities - and UHasselt in particular - is a great asset for recruiting scientific talent, which is strategically important for our expansion plans. Our future lab in Limburg will create a new dynamic in the local ecosystem of clinical development."

Xiaomin Chen, COO Amador Bioscience

"The expertise in pharma logistics of H.Essers is proving to be invaluable for many global top 20 pharma companies, having selected Limburg as a central hub for their European supply chain network."

Bob Van Steenwegen, H.Essers

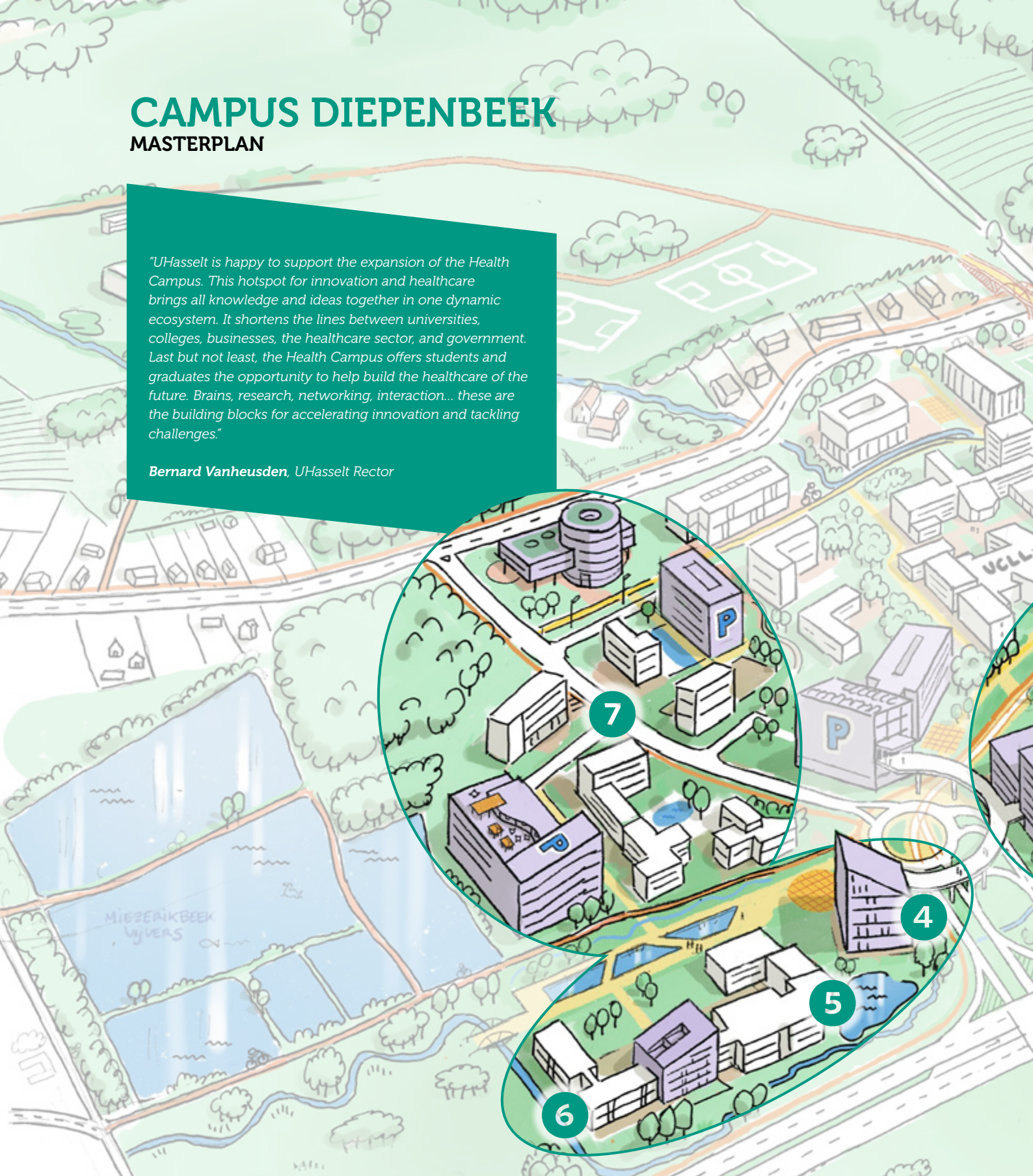


CAMPUS DIEPENBEEK

MASTERPLAN

"UHasselt is happy to support the expansion of the Health Campus. This hotspot for innovation and healthcare brings all knowledge and ideas together in one dynamic ecosystem. It shortens the lines between universities, colleges, businesses, the healthcare sector, and government. Last but not least, the Health Campus offers students and graduates the opportunity to help build the healthcare of the future. Brains, research, networking, interaction... these are the building blocks for accelerating innovation and tackling challenges."

Bernard Vanheusden, UHasselt Rector



1 BioVille incubator

- Shared (lab) facilities
- Opening third wing in 2023

2 Business District

- Opening 2024
- Office & lab space
- 15,000 m²

3 Biomedical Research Institute

- Immunology
- Neuroscience
- Cardiology
- Biomedical datasciences & digital health

4 Gate building

- Open care innovation center
- Shared meeting facilities
- Business restaurant
- Opening 2025



"BioVille has started construction of a third wing, totalling 2,000 m². While the first buildings were developed to house start-ups, the new extension is also aimed at scale-ups. The investment should strengthen BioVille's position as a frontrunner in biotech, medtech, and digital health. BioVille, already the economic beating heart of the site, also wants to develop further into a dynamic business district within the wider Health Campus. Additional space, laboratories, and other facilities are envisaged, aimed primarily at the acquisition of larger health & care companies."

Tom Vanham, LRM General Managing Director

5 Institute for materials research

- Materiomics
- Bioelectronics
- Nanotechnology

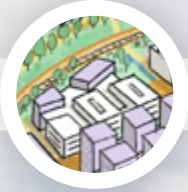
6 REVAL research center

- Rehabilitation sciences
- Rehabilitation technology
- Advanced movement analysis

7 Expansion zone 2030

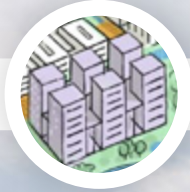
8 Life sciences - talent of one university and two university colleges located on campus

mid
2023



**Additional wing
for BioVille
incubator**
2,000 m²

mid
2024



**Business
District**
15,000 m²

mid
2025



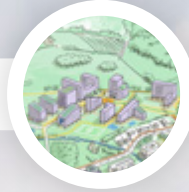
Main entrance

2030



Expansion II

2050



Expansion III





"Anima Research Centre (ARC) is a highly specialised medical research centre and has been conducting clinical trials for over 25 years to test new drugs with a focus on the central nervous system. Since 2018, ARC is also one of the largest testing centres in the world for vaccines and other preventive treatment methods. Within the framework of its further growth ambitions with, among other initiatives, the expansion of the Anima Translational Medicine Centre (ATMC) in collaboration with several global players, Anima Research has a particular interest in the Health Campus ecosystem including its close proximity to UHasselt."

Erik Buntinx, CEO Anima Research Center



"Rejuvenate Biomed is also looking forward to the innovative and exciting partnerships on the new Health Campus. Knowledge, expertise, talent, and strong ambition are the building blocks of the new sustainable ecosystem in Diepenbeek. Being part of this international engine of innovation prepares us for a successful future together. Searching for symbiosis for the entire development process to be established is crucial for a globally oriented biotech company like Rejuvenate Biomed."

Ann Beliën, CEO Rejuvenate Biomed



**HEALTH
CAMPUS**
LIMBURG DC

DO YOU WANT TO BE PART
OF THE HEALTH CAMPUS
LIMBURG DC?

GET IN TOUCH:

Health Campus Limburg 

Abis, Agoralaan
BE-3590 Diepenbeek
+32 11 30 01 04
info@healthcampus.be



www.healthcampus.be



An initiative of:



In cooperation with:

